



Magswitch Technology, Inc.  
 8774 Yates Dr. Suite 140  
 Westminster, CO 80031  
 Magswitch.com.au  
 303-468-0662

# Magswitch Extenda-Lift 1000

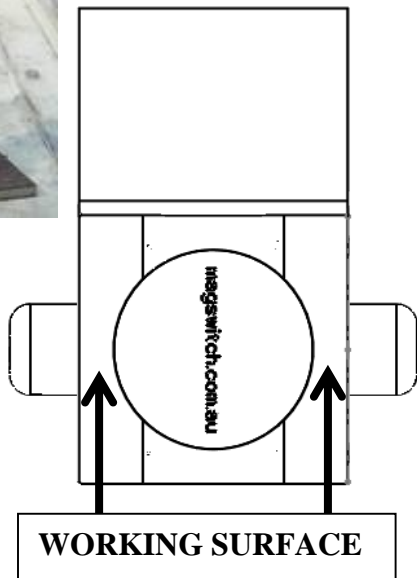
## P/N: 8130177

With the Magswitch Magnetic Extenda-Lift, you can pick up and move steel without bending over and using your hands; offering convenience and safety advantages. You can pick up plate, pipe, or steel scrap off the floor with ease. Also works great for picking up hot, sharp or dirty steel without touching it. Extenda-Lift 600 has 600 lobs (272 kg) of hold force. Extenda-Lift 1000 has 1000 lbs (454 kg) of hold force. Ideal for cities and utilities. Valve box and small lid removal.



**WARNING!**  
**Do Not Operate Unless In**  
**Contact With Ferrous Target**

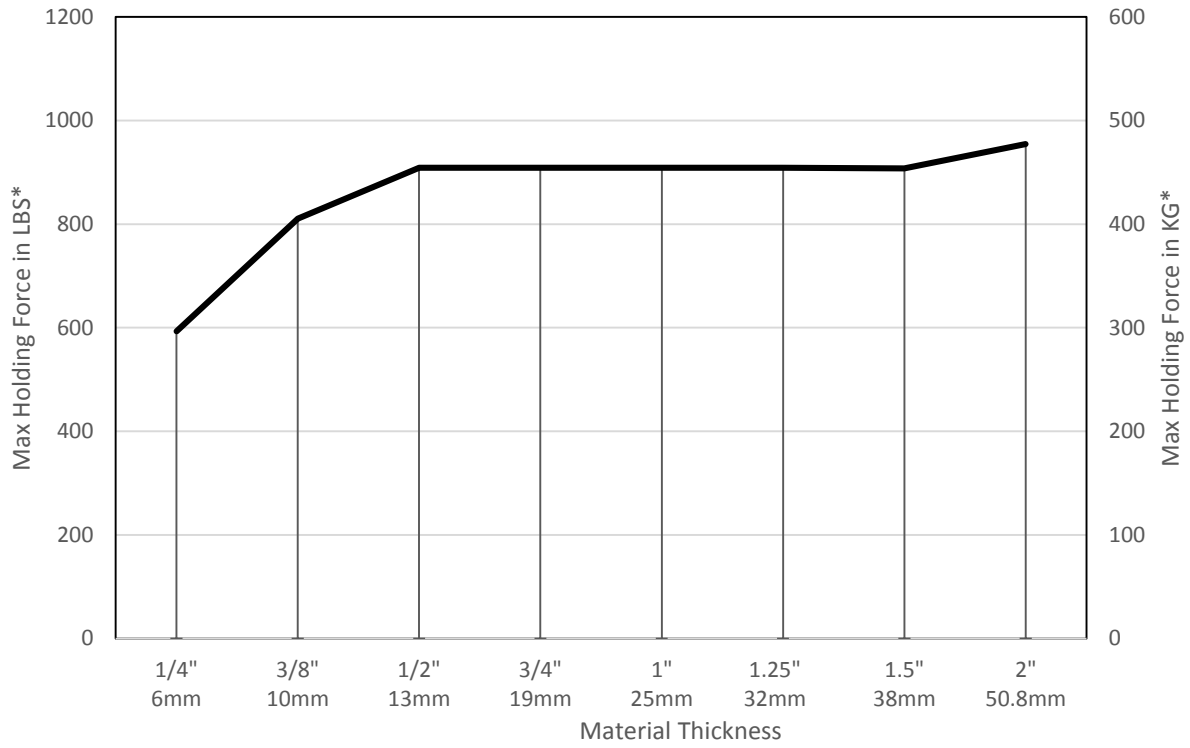
SPECIFICATIONS	
<b>P/N: 8130177 - MAGSWITCH Extenda-Lift 1000</b>	
Max Breakaway*	1000 lbs/454 kg
Full Saturation Thickness	0.5"/ 13mm
2:1 Shear Working Load*	148 lbs/67 kg
Net Weight	9.8 lbs/4.4 kg
Overall Height	724 mm
Magnetic Pole Footprint	72mm x 108mm



Part Number 110692  
 Revision Date: June 26, 2012

\* Max Breakaway determined in laboratory environment on 2" thick SAE1018 Steel with surface roughness 63 micro inches. Many factors contribute to the actual breakaway force in each application. Always test the magswitch in each application before deployment. Refer to the magswitch information booklet for more information.

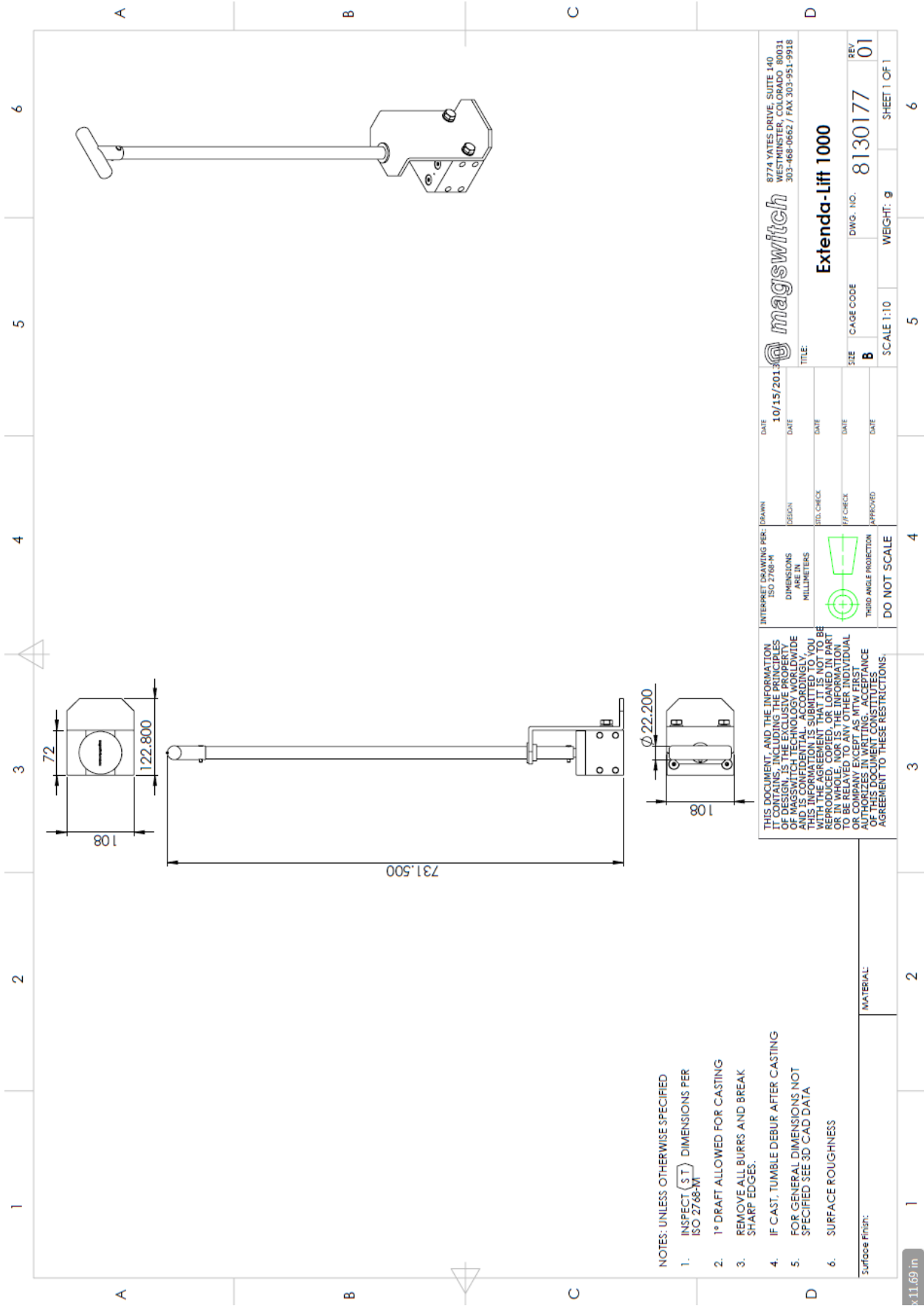
Magswitch Extenda-Lift 1000 Breakaway Data vs. Thickness



Part Number 110692  
Revision Date: June 26, 2012



Part Number 110692  
 Revision Date: June 26, 2012



NOTES: UNLESS OTHERWISE SPECIFIED

1. INSPECT  $\boxed{ST}$  DIMENSIONS PER ISO 2768-M
2. 1° DRAFT ALLOWED FOR CASTING
3. REMOVE ALL BURRS AND BREAK SHARP EDGES.
4. IF CAST, TUMBLE DEBUR AFTER CASTING
5. FOR GENERAL DIMENSIONS NOT SPECIFIED SEE 3D CAD DATA
6. SURFACE ROUGHNESS

Surface Finish:

MATERIAL:

x11.69 in